

AMA POLICY RESOLUTIONS RELEVANT TO DOCTORS OF OSTEOPATHIC MEDICINE



The American Medical Association supports both osteopathic and allopathic medical students in their journey through medical school and into their years as practicing physicians. Here are examples of specific actions and official policy the AMA has taken on behalf of doctor of osteopathic medicine (DO) students.

Definition of a Physician

The AMA defines a physician as an individual who has received a "Doctor of Medicine Degree" (MD) or a "Doctor of Osteopathic Medicine" (DO). [H-405.969]

Retirement of the National Board of Medical Examiners Step 2 Clinical Skills Exam for U.S. Medical Graduates: Call for Expedited Action by the AMA

The AMA has taken immediate action to eliminate clinical skill examinations including the USMLE Step 2 CS and COMLEX Level 2 Performance Evaluation. [D-275.950]

Additions to the United States Medical Licensure Examination and Comprehensive Osteopathic Medical Licensure Examination

The AMA opposes additions to USMLE and COMLEX examinations that lack predictive validity for future performance as a physician. [H-275.929]

National Resident Matching Program Reform

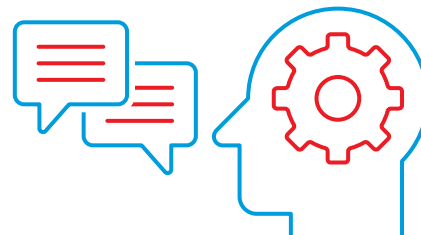
The AMA is actively working with the National Resident Matching Program® (NRMP) in reforming disparities within the residency application process and to allow both flexibility and standard rules for applicant and will advocate for the possibility of including the Osteopathic Match in the NRMP Match. [D-310.977]

AMA Membership Strategy: Osteopathic Medicine

The AMA encourages all state societies to accept DOs as members at every level and encourages DO participation in the AMA Medical Student Section Governing Council and chapters. The AMA also encourages that DO members continue to participate in membership outreach programs. [G-635.053]

Clarification of the Title "Doctor" in the Hospital Environment

The title "doctor" assigned in the hospital environment is an individual who has received a "Doctor of Medicine" or a "Doctor of Osteopathic Medicine" degree. [D-405.991]



LEAD. MOTIVATE. INFLUENCE.