

REPORT OF THE BOARD OF TRUSTEES

BOT Report 10-I-19

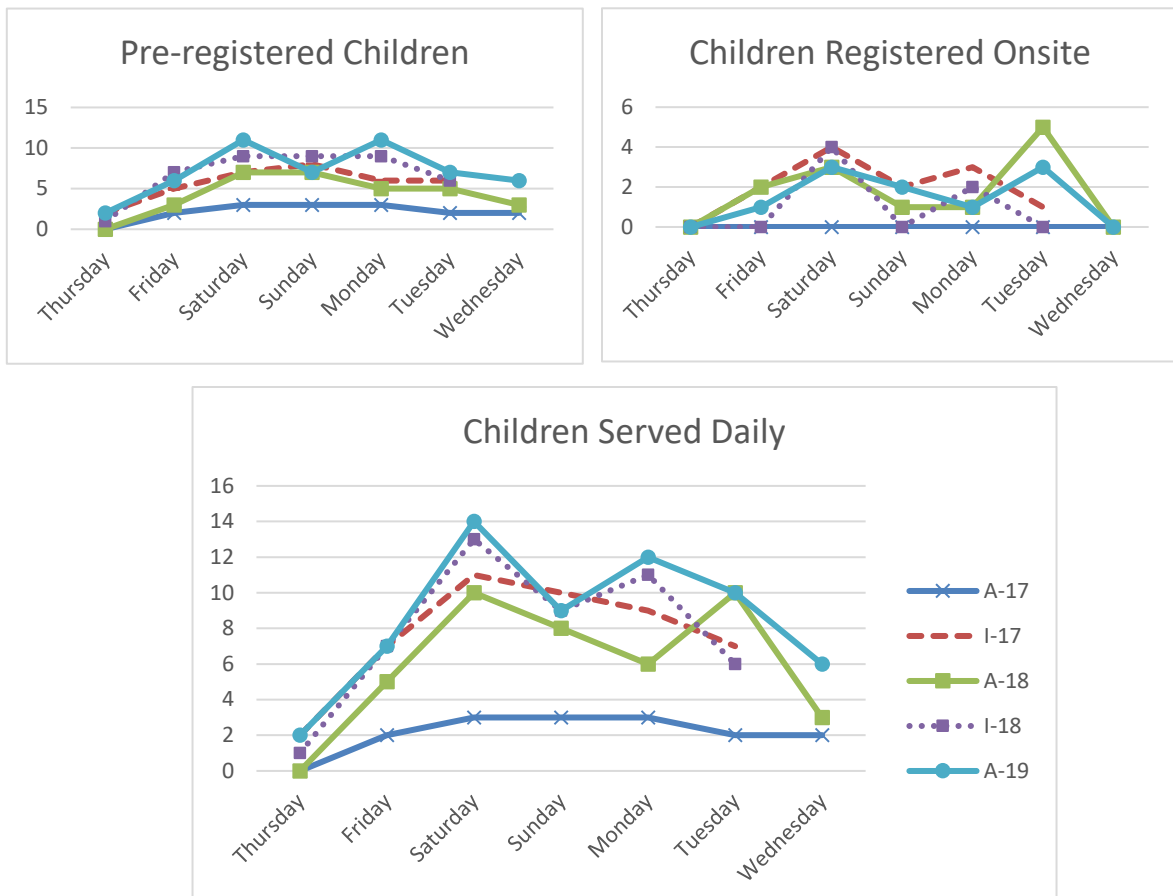
Subject: Childcare at AMA HOD Meetings

Presented by: Jesse M. Ehrenfeld, MD, MPH, Chair

Referred to: Reference Committee F
(Ann R. Stroink, MD, Chair)

1 At the 2016 Annual Meeting, the House of Delegates adopted Policy D-600.958, “Childcare at the
2 AMA Meetings,” calling for our AMA to initiate a three-year pilot of onsite childcare at meetings
3 of the House of Delegates. The pilot was begun at the 2017 Annual Meeting, and this report
4 presents data on utilization of the childcare service through the first five meetings (2½ years) of the
5 pilot.

6
7 The graphs below show the daily utilization of the service for each of the five meetings. Separate
8 figures are presented for children registered in advance and those registered onsite. Advance
9 registration is encouraged to ensure appropriate staffing and other resources, but children may be



registered onsite on a space-available basis. No children were registered onsite at A-17, the first meeting in the pilot program.

As can be seen from the graphs, daily use of the childcare service is quite variable. Utilization has been uniformly low on Thursdays, picking up on Fridays and peaking on Saturday. This tracks with hotel room pickup, which is also greatest on the latter two days. Thursdays are the opening day for most of the AMA sections. Use of the service generally declines from Saturday to the conclusion of the House of Delegates meeting, although there seems to be a secondary peak on Monday or Tuesday.

	A-17	I-17	A-18	I-18	A-19
Least used day (#)	Thursday (0)	Thursday (2)	Thursday (0)	Thursday (1)	Thursday (2)
Most used day (#)	Sat, Sun, Mon (3)	Saturday (11)	Sat, Tues (10)	Saturday (13)	Saturday (14)

The total number of children receiving care and the number of families represented by those children provide another measure of utilization. Both the number of children served and the number of families using the service increased after A-17, although the numbers appear to have stabilized since that time. The greatest utilization thus far was at I-17 in Honolulu, which saw 18 children cared for, with nearly half of them coming through walk-in registrations. Those 18 children represented 11 families. This past June saw 17 total children from 13 families using the service. At each meeting, pre-registrations have made up a majority of children cared for, albeit just a slight majority in Hawaii. These data appear in the following table.

	A-17	I-17	A-18	I-18	A-19
Total children registered	4	18	14	15	17
Families using service	3	11	11	11	13
Percentage preregistered	100%	53%	70%	87%	83%

Provider

The service has been provided by Accent on Children (Accent), which is fully licensed and uses caregivers with considerable experience in working with children. Staff to child ratios range from 1:2 for infants to 1:8 for school-age children. Users pay a fee to Accent for the service on either a full or half-day basis that varies with a child's age. Fees for the five meetings at which the service has been provided have been stable and are shown in the following table:

	Age 6 to 35 months	Age 3 years and up
Half day	\$60	\$50
Full day	\$100	\$90
Hourly, 4 hour minimum*	\$12/hr	\$10/hr

* The hourly option was first offered at I-18.

In addition, users pay a \$10 per child registration fee and are responsible for their child's (children's) snacks and meals. Meals are available through Accent at a cost of \$15. Fees are on a per child basis. (Daily user fees at the 2019 Interim Meeting will decline modestly, although Accent remains the vendor.)

At the 2019 Annual Meeting Accent collected approximately \$4200 in user fees, of which \$300 was for meals. On average this was slightly less than \$250 per child, because some children attend

daily while many attend only one or two days. Previous meetings saw similar average figures on a per child basis.

AMA Expense

Although parents pay Accent for each child participating in the program, our AMA expends additional funds to support the service. Our AMA pays a management fee directly to Accent, but also incurs additional expenses to provide lodging for the caregivers. Additional, smaller amounts have been expended to ship materials to the meeting site. Direct AMA expenditures for each of the first five meetings appear below:

	Accent	Hotel	Other	Total
A-17	\$5150	\$2230		\$7380
I-17	\$4600	\$1197		\$5797
A-18	\$4893	\$2021	\$250	\$7164
I-18	\$4893	\$2046		\$6939
A-19	\$4988	\$2636	\$264	\$7,888
				\$35,168

Indirect expenses such as staff time and diversion of meeting space to childcare are not included in these figures. AMA's payments to Accent are contractually arranged. The contract does not extend beyond the 2019 Interim Meeting, so future expenses have not been determined.

DISCUSSION

When the pilot program was approved by the House at the 2016 Annual Meeting, no criteria were established by which to evaluate the success or failure of the program, and your Board has made its recommendation based upon utilization of the program and in the light of efforts to provide benefits to our members.

Through five meetings AMA expenses have averaged just over \$7000 per meeting or \$718 per family utilizing the service. (That is $\$35,168 \div 46$, which is likely not an unduplicated count of families.) This does not include other indirect expenses, such as negotiating the contract with the vendor or arranging for a room and does not include costs of childcare liability insurance. The issue of liability, or potential liability, cannot be dismissed out of hand. Irrespective of fault, our AMA could expect to be named in any lawsuit stemming from an injury to a child.

The concierge at most hotels is available to help parents arrange for childcare, and this is certainly the case for the hotels in which our AMA holds House of Delegates Meetings. The site of AMA's Annual Meetings, the Hyatt Regency Chicago, lists three services through which childcare can be arranged for example. Preparation for future HOD meetings will include working with our contracted hotels to coordinate the use of these services in lieu of our AMA directly contracting with an outside vendor. This provides a reasonable alternative for our AMA to continue to offer childcare services. In addition, coordinating childcare through the hotel's preferred vendors would address the liability issue as the Association would no longer be contracting with a provider.

1 RECOMMENDATIONS

2

3 The Board of Trustees recommends that the following recommendations be adopted and the
4 remainder of the report be filed.

5

6 1. That Policy D-600.958 be rescinded, as the pilot program has concluded. (Rescind HOD
7 Policy)

8

9 2. That our American Medical Association continue to coordinate childcare at its annual and
10 interim meetings for interested parent or guardian attendees and provide a room in the meeting
11 venue or hotel for use by these childcare providers. (Directive to Take Action)

Fiscal Note: No significant impact