

**Front Matter**

**Modifiers** (See Appendix A for definitions)

- 21 *Prolonged evaluation and management services*
- 22 Increased Unusual procedural services
- 23 *Unusual anesthesia*

**Correct the description for consistency with the primary listing in Appendix A**

**Front Matter**

**AMA Health Care Professionals Advisory Committee (HCPAC)**

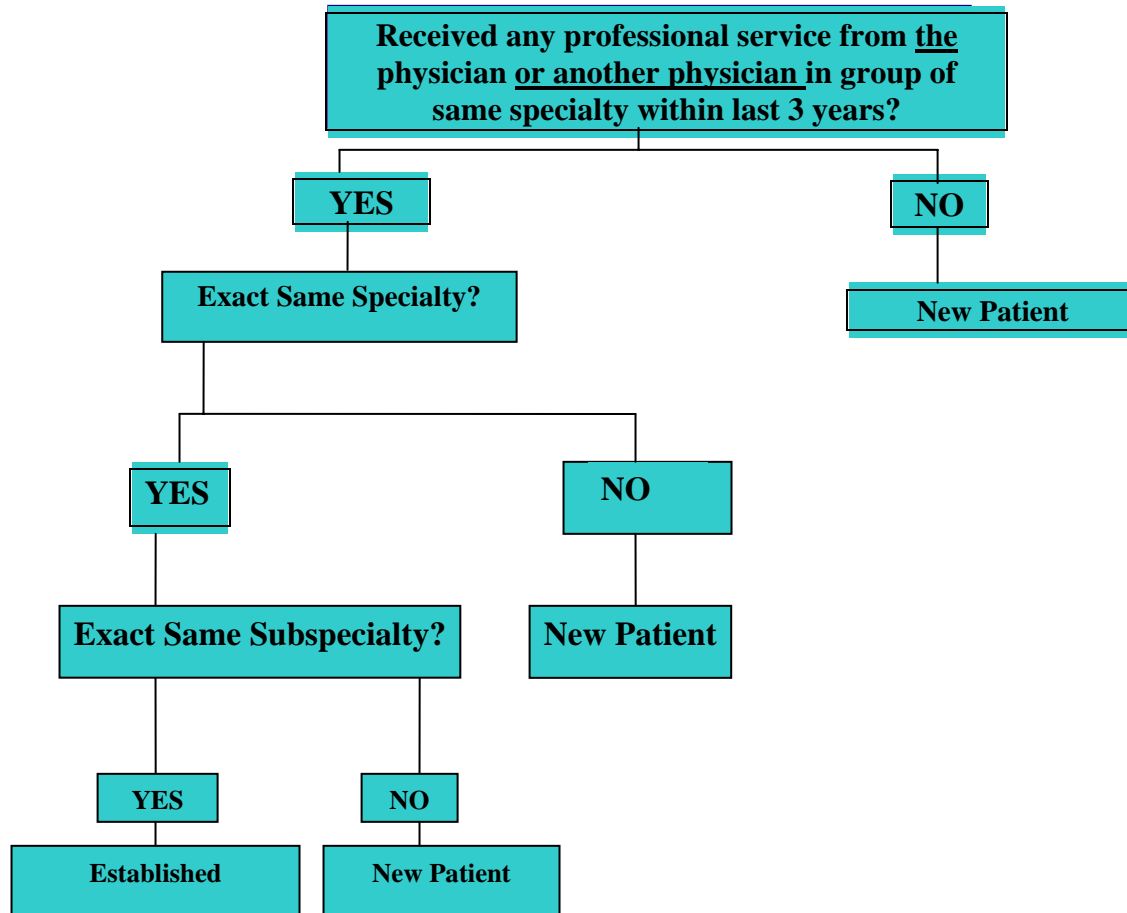
American Association of Naturopathic Naturopathic Physicians  
 Wendell B. Milliman, ND

**Correct the specialty society spelling**

**Evaluation and Management**

**Decision Tree for New vs Established Patients**

**DECISION TREE FOR NEW VS. ESTABLISHED PATIENTS**





**Correct the patient definition to clarify the application of the definition to patients who follow a physician to a new group**

---

**Evaluation and Management**

**Inpatient Neonatal and Critical Care and Intensive Services**

99295 *Initial inpatient neonatal critical care, per day, for the evaluation and management of a critically ill neonate, 28 days of age or less)*

*This code is reserved for the date of admission for neonates who are critically ill. Critically ill neonates require cardiac and/or respiratory support (including ventilator or nasal CPAP when indicated), continuous or frequent vital sign monitoring, laboratory and blood gas interpretations, follow-up physician reevaluations, and constant observation by the health care team under direct physician supervision. Immediate preoperative evaluation and stabilization of neonates with life threatening surgical or cardiac conditions are included under this code. Neonates with life threatening surgical or cardiac conditions are included under this code.*

Care for neonates who require an intensive care setting but who are not critically ill is reported using the initial neonate hospital care code (~~99221-99223~~ 99477).

**Correct the instructions following code 99295 to clarify appropriate reporting for the hospital neonatal patient.**

---

**Surgery**

**Spine (Vertebral Column)**

**Spinal Instrumentation**

✚ 22840 *Posterior non-segmental instrumentation (eg, Harrington rod technique, pedicle fixation across one interspace, atlantoaxial transarticular screw fixation, sublaminar wiring at C1, facet screw fixation) (List separately in addition to code for primary procedure)*

(Use 22840 in conjunction with 22100-22102, 22110-22114, 22206-~~22207~~ ~~22208~~, 22210-22214, 22220-22224, 22305-22327, 22532-22533, 22548-22558, 22590-22612, 22630, 22800-22812, 63001-63030, 63040-63042, 63045-63047, 63050-63056, 63064, 63075, 63077, 63081, 63085, 63087, 63090, 63101-63102, 63170-63290, 63300-63307)

(For insertion of posterior spinous process distraction devices, see 0171T, 0172T)

✚ 22841 *Internal spinal fixation by wiring of spinous processes (List separately in addition to code for primary procedure)*

(Use 22841 in conjunction with 22100-22102, 22110-22114, 22206-~~22207~~ ~~22208~~, 22210-22214, 22220-22224, 22305-22327, 22532-22533, 22548-22558, 22590-22612, 22630, 22800-22812, 63001-63030, 63040-63042, 63045-63047, 63050-63056, 63064, 63075, 63077, 63081, 63085, 63087, 63090, 63101-63102, 63170-63290, 63300-63307)

✚ 22842 *Posterior segmental instrumentation (eg, pedicle fixation, dual rods with multiple hooks and sublaminar wires); 3 to 6 vertebral segments (List separately in addition to code for primary procedure)*

(Use 22842 in conjunction with 22100-22102, 22110-22114, 22206-~~22207~~ ~~22208~~, 22210-22214, 22220-22224, 22305-22327, 22532-22533, 22548-22558, 22590-22612,



22630, 22800-22812, 63001-63030, 63040-63042, 63045-63047, 63050-63056, 63064, 63075, 63077, 63081, 63085, 63087, 63090, 63101-63102, 63170-63290, 63300-63307)

✚ 22843 *7 to 12 vertebral segments (List separately in addition to code for primary procedure)*

(Use 22843 in conjunction with 22100-22102, 22110-22114, 22206-~~22207~~ ~~22208~~, 22210-22214, 22220-22224, 22305-22327, 22532-22533, 22548-22558, 22590-22612, 22630, 22800-22812, 63001-63030, 63040-63042, 63045-63047, 63050-63056, 63064, 63075, 63077, 63081, 63085, 63087, 63090, 63101-63102, 63170-63290, 63300-63307)

✚ 22844 *13 or more vertebral segments (List separately in addition to code for primary procedure)*

(Use 22844 in conjunction with 22100-22102, 22110-22114, 22206-~~22207~~ ~~22208~~, 22210-22214, 22220-22224, 22305-22327, 22532-22533, 22548-22558, 22590-22612, 22630, 22800-22812, 63001-63030, 63040-63042, 63045-63047, 63050-63056, 63064, 63075, 63077, 63081, 63085, 63087, 63090, 63101-63102, 63170-63290, 63300-63307)

✚ 22845 *Anterior instrumentation; 2 to 3 vertebral segments (List separately in addition to code for primary procedure)*

(Use 22845 in conjunction with 22100-22102, 22110-22114, 22206-~~22207~~ ~~22208~~, 22210-22214, 22220-22224, 22305-22327, 22532-22533, 22548-22558, 22590-22612, 22630, 22800-22812, 63001-63030, 63040-63042, 63045-63047, 63050-63056, 63064, 63075, 63077, 63081, 63085, 63087, 63090, 63101-63102, 63170-63290, 63300-63307)

✚ 22846 *4 to 7 vertebral segments (List separately in addition to code for primary procedure)*

(Use 22846 in conjunction with 22100-22102, 22110-22114, 22206-~~22207~~ ~~22208~~, 22210-22214, 22220-22224, 22305-22327, 22532-22533, 22548-22558, 22590-22612, 22630, 22800-22812, 63001-63030, 63040-63042, 63045-63047, 63050-63056, 63064, 63075, 63077, 63081, 63085, 63087, 63090, 63101-63102, 63170-63290, 63300-63307)

✚ 22847 *8 or more vertebral segments (List separately in addition to code for primary procedure)*

(Use 22847 in conjunction with 22100-22102, 22110-22114, 22206-~~22207~~ ~~22208~~, 22210-22214, 22220-22224, 22305-22327, 22532-22533, 22548-22558, 22590-22612, 22630, 22800-22812, 63001-63030, 63040-63042, 63045-63047, 63050-63056, 63064, 63075, 63077, 63081, 63085, 63087, 63090, 63101-63102, 63170-63290, 63300-63307)

✚ 22848 *Pelvic fixation (attachment of caudal end of instrumentation to pelvic bony structures) other than sacrum (List separately in addition to code for primary procedure)*



(Use 22848 in conjunction with 22100-22102, 22110-22114, 22206-~~22207~~ 22208, 22210-22214, 22220-22224, 22305-22327, 22532-22533, 22548-22558, 22590-22612, 22630, 22800-22812, 63001-63030, 63040-63042, 63045-63047, 63050-63056, 63064, 63075, 63077, 63081, 63085, 63087, 63090, 63101-63102, 63170-63290, 63300-63307)

‡ 22851 *Application of intervertebral biomechanical device(s) (eg, synthetic cage(s), threaded bone dowel(s), methylmethacrylate) to vertebral defect or interspace (List separately in addition to code for primary procedure)*

(Use 22851 in conjunction with 22100-22102, 22110-22114, 22206-~~22207~~ 22208, 22210-22214, 22220-22224, 22305-22327, 22532-22533, 22548-22558, 22590-22612, 22630, 22800-22812, 63001-63030, 63040-63042, 63045-63047, 63050-63056, 63064, 63075, 63077, 63081, 63085, 63087, 63090, 63101-63102, 63170-63290, 63300-63307)

**Remove add-on code 22208 from the spinal instrumentation cross-references**

---

**Surgery  
Musculoskeletal System  
Foot and Toes  
Fracture and /or Dislocation**

● 28446 Open osteochondral autograft, talus (includes obtaining graft[s])  
*(Do not report 28446 in conjunction with 27705, 27707)*  
*(For arthroscopic osteochondral talus graft, use 29892)*  
*(For open osteochondral allograft or repairs with industrial grafts, use ~~28899~~ 27599)*

**Correct the code reference in the osteochondral allograft cross-reference to 28899.**

---

**Surgery  
Respiratory System  
Lungs and Pleura  
Removal**

**Illustration:  
Thoracentesis  
32421-32422**

Accumulated fluid or air is removed from the pleural space by puncturing space between the ribs. In ~~32422~~ 32421, a tube is inserted and a syringe attached to the catheter for the removal of fluid and/or air.

**Correct the illustration caption code reference to refer to 32422.**

---

**Surgery  
Cardiovascular System  
Heart and Pericardium  
Thoracic Aortic Aneurysm**

33864 *Ascending aorta graft, with cardiopulmonary bypass with valve suspension; with coronary reconstruction and valve sparing aortic annulus remodeling (eg, David Procedure, Yacoub Procedure)*



(Do not report 33864 in conjunction with 32551, 33210-33211, 33400, 33860-33863)

**Correct the code reference with the addition of a hyphen between 33860 and 33863 to clarify the intent of this reference to include 33861.**

---

**Surgery  
Cardiovascular System  
Arteries and Veins  
Endovascular Repair of Abdominal Aortic Aneurysm**

‡▲34806 Transcatheter placement of wireless physiologic sensor in aneurysmal sac during endovascular repair, including radiological supervision and interpretation, instrument calibration, and collection of pressure data (List separately in addition to code for primary procedure)

**Revise the code descriptor to add the correct add-on nomenclature.**

---

**Surgery  
Digestive System  
Esophagus  
Manipulation**

43460 Esophagogastric tamponade, with balloon (Sengstaken ~~Sengstaaken~~ type)

**Change spelling to Sengstaken.**

---

**Medicine  
Cardiovascular  
Therapeutic Services and Procedures**

(For nonsurgical septal reduction therapy [eg, alcohol ablation], use Category III code 0024T)

92950 Cardiopulmonary resuscitation (eg, in cardiac arrest)

**Delete crossreference that refers to deleted code 0024T.**

---

**Medicine  
Cardiovascular  
Cardiac Catheterization**

*Cardiac catheterization is a diagnostic medical procedure ...*

*When coronary artery, arterial coronary conduit or venous bypass graft ...*

Modifier 51 should not be appended to codes 93503, 93501-93533, 93539, 93540, 93544-93556.

◎●93501 *Right heart catheterization*

**Revise introductory text instructions to reflect current code status**

---



**Medicine**  
**Cardiovascular**  
**Cardiac Catheterization**  
**Injection Procedures**

When injection procedures are performed in conjunction with cardiac catheterization, these services do not include introduction of catheters but do include repositioning of catheters when necessary and use of automatic power injectors. Injection procedures 93539-93545 represent separate identifiable services and may be coded in conjunction with one another when appropriate. The technical details of angiography, supervision of filming and processing, interpretation, and report are not included. To report radiological supervision, interpretation, and report for 93542 or 93543, use 93555. To report radiological supervision, interpretation, and report for 93539, 93540, 93541, 93544, or 93545, use 93556. Modifier 51 should not be appended to 93539, 93540, 93544-93556.

© 93539     *Injection procedure during cardiac catheterization; for selective opacification of arterial conduits (eg, internal mammary), whether native or used for bypass*

**Revise introductory text instructions to reflect current code status**

---



**Medicine**  
**Cardiovascular**  
**Intracardiac Electrophysiological Procedures/Studies**

Intracardiac electrophysiologic studies (EPS) are an invasive diagnostic...

**Definitions**

**Arrhythmia Induction**-*In most electrophysiologic studies, an attempt is made...*

**Mapping** - *Mapping is a distinct procedure performed in addition...*

**Ablation** - *Once the part of the heart involved in the tachycardia is localized...*

Modifier 51 should not be appended to 93600-~~93660~~-93618, 93621-93623, 93631.

⊙93600 Bundle of His recording

**Revise introductory text instructions to reflect current code status**

---

**Index-B**

**Balloon Assisted Device**

Aorta...33967-33974, ~~93727~~

**Remove 93727 from listing of codes as it is not related to the index entry.**

---

**Index-D**

**Device**

Adjustable Gastric Restrictive Device Band .....43770-43774

Iliac Artery Occlusion Device Insertion .....34808

**Replace “Band” with “Restrictive Device”**

---

**Index-F**

**Fistula**

Anal

Repair .....0170T, 46288, 46706 ~~46708~~

**Remove invalid code from the index.**

---

**Index-H**

**Harrington Rod**

**Correct the spelling of Harrington by adding the ‘g’.**

---

**Index-R**

**Replacement**

Adjustable Gastric Restrictive Device Band .....43770-43774

Aortic Valve .....33405-33413

**Revision**

See Reconstruction

Abdomen

Intraperitoneal Catheter.....49325

Adjustable Gastric Restrictive Device Band .....43771

Aorta.....33404



**Replace "Band" with "Restrictive Device"**

---

**Index-S**

*Semiquantitative.....81005*

*Sengstaken ~~Sengstaaken~~ Tamponade*

Esophagus .....43460

*Scanning Procedure.....33774-33777*

*See Repair, Great Arteries; Revision*

**Change spelling to Sengstaken.**

---